

Installation Instructions

Step
& Wall







REAL WOOD FLOORING



Dear client,
thanks for choosing Step & Wall

Before starting the installation, read carefully the instructions.
If this instructions are not followed, the installer will be acting
on his own responsibility and the guarantee will not be valid.

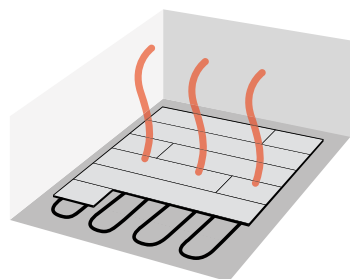
INSTALLATION MATERIALS:

- **Step & Wall floor** 
- **Underlay** 
- **Cutter** 
- **Meter** 
- **Pencil** 
- **Saw** 

Please don't use glue, screws or nails during the installation.

BEFORE INSTALLATION

UNDERFLOOR HEATING



STEP AND WALL floors are suitable for underfloor heating, but we recommend to follow the instructions from the heating manufacturer. Do not exceed 27°C.

STEP AND WALL boxes must be stored 48 hours before installation in the same climatic conditions (temperature and humidity) as at the time of installation. This is an important condition for proper placement and long-term sustainability of the flooring.

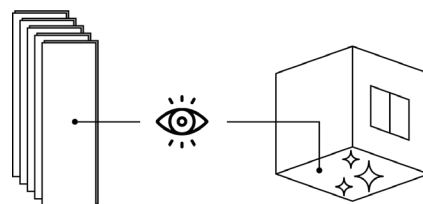
Place the boxes in the center of the room and not against a wall. Open them just before installation. The packages have to be stored horizontally to prevent deformation and never in direct contact with the ground. Check that the content are in perfect conditions. Do not install deficient material.

Important: Do not open the boxes until the moment of installation.

Remark: Veneer flooring is a natural product and therefore unique so no boards are identical. Minor variations in colour and structure are normal. Small natural marks such as knots and mineral streaks are tolerated and have no effect on the quality of the floor.

The under floor on which Step & Wall will be installed must be:

- **Clean and without dust.**
- **Firm and solid**
- **Flat:** maximum height difference can only by of 2 mm (5/64") every 2 linear meters (78 47/64").
- **Dry:** humidity must be under 2.5% if the installation doesn't have underfloor heating, 2% in case it does and 10% for multiplex.

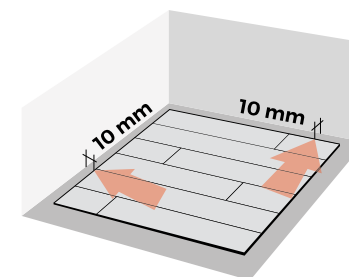


STEP AND WALL can be installed on any surface that is solid and firm. The ideal circumstances for its assembly are a temperature between 16°C (60,8 °F) and 21°C (69,8 °F) and an atmospheric humidity between 40% and 60%.



WALL DISTANCE AND EXPANSION GAPS

Step & Wall is a natural wood floor and therefore may suffer expansion due to changes in the climate conditions. Please consider gaps with a width of 8 to 10 mm and arrange them close to the fixed elements such as walls, door frames, pipes, pillars and stairs. This gaps can be covered with skirtings fixed to the wall, NEVER TO THE FLOOR.



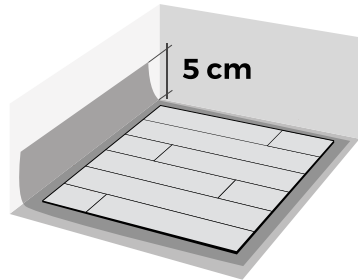
In addition, motion joints must always be installed in the following surface areas and sizes:

- Door thresholds
- Passageways
- Angled areas (L-shaped rooms)
- Room lengths and/or widths of more than 10 m (472 7/16").

INSTALLATION

UNDERLAY

In case of humid climates it is recommended that the anti-humidity base used goes 5 cm up in the wall or please use an anti-humidity tape so that the humidity does not affect the floor or the skirting.

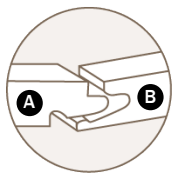


INSTALLATION

Step & Wall uses the patented Unifit X system, which makes fitting extremely simple and fast. Planks are held together thanks to the click-type tongue and groove system.



The easiest way to install the floor is to put the tongue (A) in the groove (B).



FIRST ROW

First, you must measure the surface to determine if it is necessary to cut down the width of the first row of planks. This is always necessary when the calculation

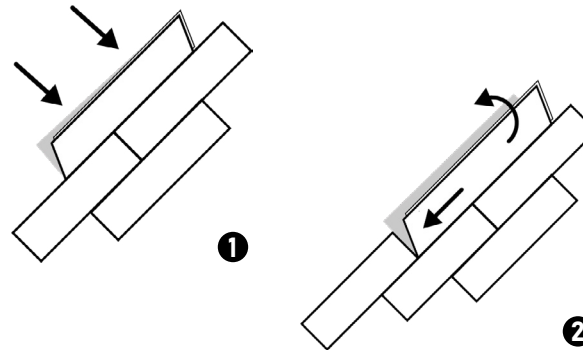
results in a last row of panels to be installed with a width under 5 cm.

Next, cut the tongue of the first board, both on the short and long sides. Put this plank, with 2 cut sides, in the corner of the room. For the planks in the first row, only the longitudinal side needs to be cut. Provide a 10 mm expansion gap. Put the first row against the wall and make sure you have a gap of 10 mm. everywhere.

Use the rest of the boards in the first row to start the second row, the minimum length is 20 cm.

SECOND ROW

Slide the planks through the long side in row 1 until it touches the second row boards. Tap this board gently to fit it. Continue following this methodology, until the last row.



LAST ROW

Leave again a 10 mm expansion wedge between the last board and the wall. Cut the tables in the last row to the appropriate length.

DOOR FRAMES

Cut the boards and make sure to leave a 10 mm expansion gap around the frame.

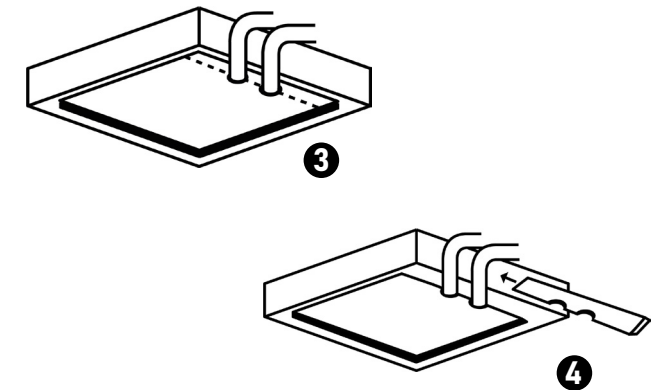
HEATING PIPES

Take a look to the images 3 and 4. It is important to follow the cutting instructions to obtain a good result. Around the pipes you can seal gaps with sealant. It is important that the expansion gap is closed to prevent moisture in the floor.

FINISH

You can walk on the floor immediately after finishing the installation because Step & Wall doesn't require any glue.

Remove all the wedges and fix the skirting to the wall. The floor will expand and contract under the skirting. If



you are not using a skirting you can cover the gap with silicone. The floor has to be sealed to prevent the penetration of humidity.

Sometimes the floor can expand near the pipes or the heating areas. It is not a defective material, it will return to its normal state once the heating is switched off or the temperature in the room is equalised for a certain period of time.

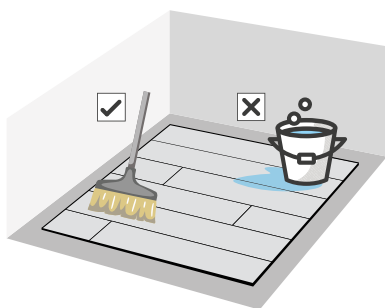
MAINTENANCE AND PROTECTION



STEP AND WALL, is a varnished natural wood floor. This varnish gives protection against scratches, wear, stains, etc. To maintain the protection level of the product, with optimal characteristics, please keep in mind the following maintenance tips:

- Use felt under chairs.
- Put a protective mat under office chairs.
- Place a doormat if the floor is installed in the entrance.

CLEANING



Dry cleaning is recommended, using a broom or mop frequently, to avoid the presence of sand, gravel, or elements that may scratch the surface.

In general, wood products should not be exposed to water or fluids for a prolonged period of time. Even if the product is protected against moisture, some liquids can leave stains if not acted upon promptly.

So we recommend you to clean any liquid that is in contact with the flooring surface to avoid any problem or defect in the quality of the floor.

PRODUCTS

Multi-purpose cleaners tend to create a matte layer on the wood. Do not use them. If you need to apply a cleaning product, check directly the products provided by our varnish manufacturer www.bona.com. Do not use wet cleaning products. In case you need to clean with water, do it as little as possible, and with the mop heavily drained to avoid excess moisture.

REVIVING THE VARNISH APPEARANCE

In case of excessive wear or scratches, it is possible to use a wood varnish restorer to repair or lessen that aspect. For further information you can see us [“Care & Maintenance”](#) instructions or you can ask us directly with your questions.

Bona[®]

Step
& Wall
REAL WOOD FLOORING

Contact:

Av. Juan Carlos I, 98, Pedro Muñoz
13620 - Ciudad Real (SPAIN)
Tel: +34 926 569 710
e-mail: info@stepandwall.com