

INSTALLATION INSTRUCTIONS

Dear client,
thanks for choosing Step & Wall.

Before starting the installation, read carefully the instructions.
If this instructions are not followed, the installer will be acting
on his own responsibility and the guarantee will not be valid.

Step
& Wall

REAL WOOD FLOORING

INSTALLATION MATERIALS:

- Installation Kit Step and Wall



- Cutter



- Pencil



- Underlay

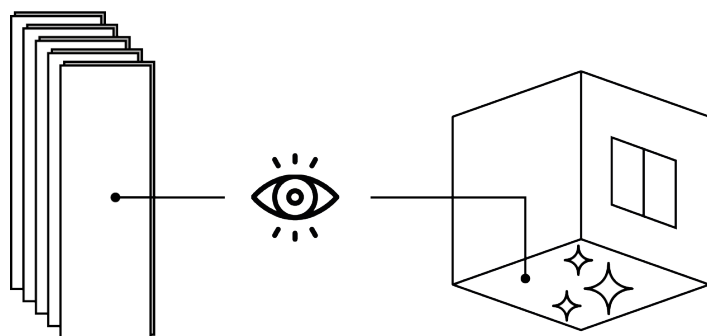
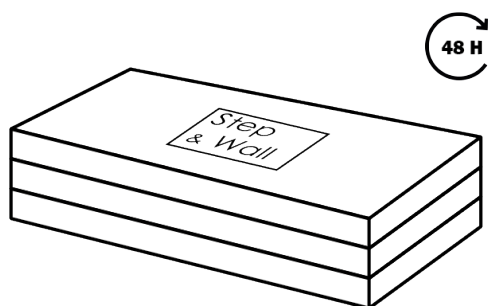
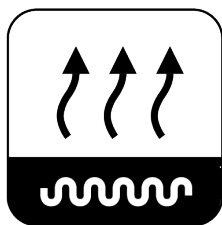


- Meter



- Saw





BEFORE INSTALLATION

UNDERFLOOR HEATING

STEP AND WALL floors are suitable for underfloor heating, but we recommend to follow the instructions from the heating manufacturer. Please do not exceed 27°C.

STEP AND WALL boxes must be stored 48 hours before installation in the same climatic conditions (temperature and humidity) as at the time of installation. This is an important condition for proper placement and long-term sustainability of the flooring

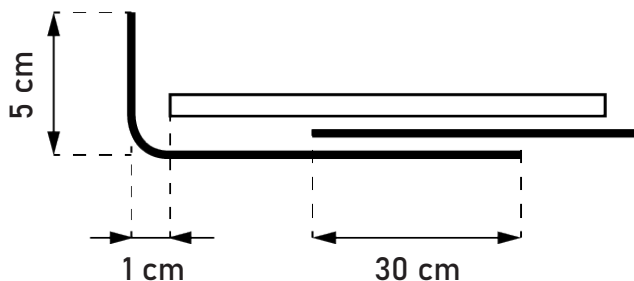
Place the boxes in the center of the room and not against a wall. Open them just before installation. The packages have to be stored horizontally to prevent deformation and never in direct contact with the ground. Check that the content are in perfect conditions. Do not install deficient material.

Important: Do not open the boxes until the moment of installation

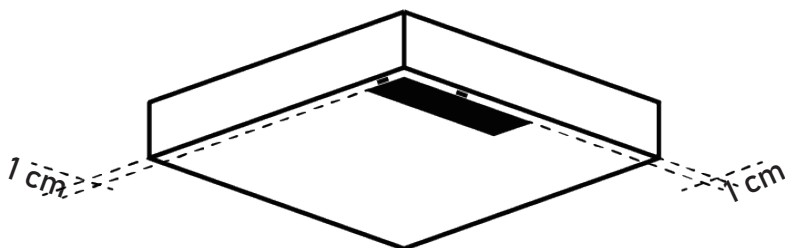
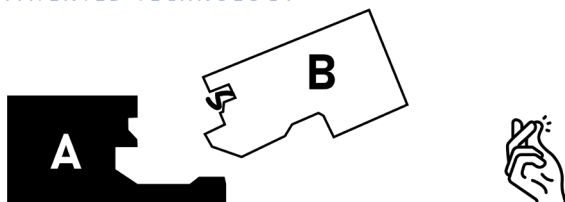
The under floor on which Step & Wall will be installed must be.

- **Clean and without dust.**
- **Firm**
- **Flat, : maximum height difference can only by of 4 mm (5/32 ") every 2 linear meters (78 47/64").**
- **Dry: humidity must be under 2.5% if the installation doesn't have underfloor heating, 2% in case it does and 10% for multiplex.**

STEP AND WALL can be installed on any surface that is solid and firm. The ideal circumstances for its assembly are a temperature between 16°C (60,8 °F) and 21°C (69,8 °F) and an atmospheric humidity between 40% and 60%.



UNIFIT[®]
PATENTED TECHNOLOGY



INSTALLATION

UNDERLAY

In case of humid climates it is recommended that the anti-humidity base used goes 5 cm up in the wall or please use an anti-humidity tape so that the humidity does not affect the floor nor the skirting.

LAYOUT DIRECTIONS

To highlight the beauty of natural wood we recommend to place the panels parallel to the entrance of the light or in the direction of the longest wall.

INSTALLATION

Step & Wall uses the patented Unifit X system, which makes fitting extremely simple and fast. Planks are held together thanks to the click-type tongue and groove system.

Step & Wall is a natural wood floor and therefore may suffer expansion due to changes in the climatic conditions.

Please consider gaps with a width of 8 mm to 10mm and arrange them close to fixed elements such as walls, door frames, pipes, beams, stairs. This gaps can be covered with skirtings fixed to the wall, never to the floor.

The easiest way to install the floor is to put the tongue (A) in the groove (B).

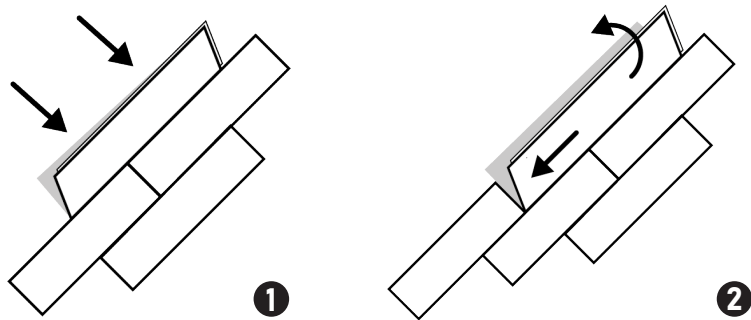
FIRST ROW

First, you must measure the surface to determine if it is necessary to cut down the width of the first row of planks. This is always necessary when the calculation results in a last row of panels to be installed with a width under 5 cm.

Next, cut the tongue of the first board, both on the short and long sides. Put this plank, with 2 cut sides, in the corner of the room. For the planks in the first row, only the longitudinal side needs to be cut.

Provide a 10 mm expansion gap using wedges. Put the first row against the wall and make sure you have a gap of 10 mm everywhere.

Use the rest of the boards in the first row to start the second row, the minimum length is 20 cm.



SECOND ROW

Slide the planks through the long side in row 1 until it touches the second row boards. Tap this board gently to fit it. Continue following this methodology, until the last row.

LAST ROW

Leave again a 10 mm expansion wedge between the last board and the wall. Cut the tables in the last row to the appropriate length..

DOOR FRAMES

Cut the boards and make sure to leave a 10 mm expansion gap around the frame.

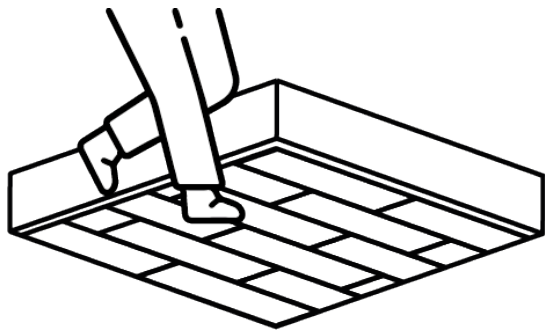
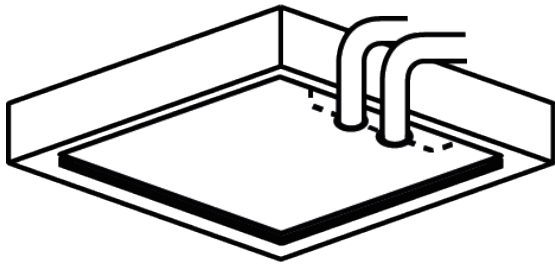
HEATING PIPES

Take a look to the picture. It is important to follow the cutting instructions to obtain a good result. Around the pipes you can seal gaps with sealant. It is important that the expansion gap is closed to prevent moisture in the floor.

FINISH

You can walk on the floor immediately after finishing the installation because Step & Wall doesn't require any glue.

Remove all the wedges and fix the skirting to the wall. The floor will expand and contract under the skirting. If you are not using a skirting you can cover the gap with silicone. The floor has to be sealed to prevent the penetration of humidity.





Bona®

MAINTENANCE AND PROTECTION

STEP AND WALL, is a varnished natural wood floor. This varnish gives protection against scratches, wear, stains, etc. To maintain the protection level of the product, with optimal characteristics, please keep in mind the following maintenance tips:

- Use felt under chairs.
- Put a protective mat under office chairs.
- Place a doormat if the floor is installed in the entrance.

CLEANING

Dry cleaning is recommended, using a broom or mop frequently, to avoid the presence of sand, gravel, or elements that may scratch the surface.

PRODUCTS

Multi-purpose cleaners tend to create a matte layer on the wood. Do not use them. If you need to apply a cleaning product, check directly the products provided by our varnish manufacturer www.bona.com. Do not use wet cleaning products. In case you need to clean with water, do it as little as possible, and with the mop heavily drained to avoid excess moisture.

REVIVING THE VARNISH APPEARANCE

In case of excessive wear or scratches, it is possible to use a wood varnish restorer to repair or lessen that aspect. When the floor is placed in places with abundant presence of liquids (such as kitchen or bathroom), it is necessary to apply this restorer by default. We especially recommend the restorer provided by our own manufacturer www.bona.com. The recommendation for floors placed in normal places, is to apply the restorer four times a year, with the surface perfectly clean.