



ISLAND

COLLECTION

Parquet wood floors - take your floors from
Ordinary to extraordinary.

Our ISLAND COLLECTION of engineered hardwood flooring is made from Western European Oak, and offers one of our widest colour selections. Unique finishing techniques, colour enhancement processes and hand-crafted smooth, brushed or distressed finishes ensures a floor to suit every room and décor.





SUPERIOR STABILITY & CONSISTENCY

HEVEA BRASILIENSIS (Rubberwood) is a plantation hardwood timber that has similar density to White Oak. It is well-known that Hevea core in 3 layered engineered floors is stronger and more reliable than other species used in the market due to its physical and mechanical strength.

RESPONSIBLY HARVESTED & MANUFACTURED

Our company employs sound environmental care policies by using renewable resources and VOC safe components. We take great pride in being able to offer everyone a totally safe, green product. Our 3 layered engineered flooring composition encompasses the use of legally compliant and renewable timber resources.

WORLD CLASS FINISHING

The strength of our technology and production processes allow us to distribute and install our timber flooring products worldwide with confidence, even in extreme climates. This ensures a look and feel to suit your design preference and needs that will last the lifetime of the floor.

TRY OUT OUR Interactive Floor Applications

When selecting our Island Floors, we recommend that you try out our **Room Visualiser** and **Room Planner** viewable on woodlineparquetry.com

Woodline Parquetry's revolutionary tools will help clients envision the floor that best suits their space:

The **Room Visualiser** – accessible via all of our websites – allows anyone with a mobile device to take a photo of any room and apply any one of our Island Collection floors. The app allows people to choose any of our floors, to lay the floor at different angles, and save and share those images with others.

Our **Room Planner** is another great tool to help your clients get an idea of how our floors will look in a variety of settings. As with the Room Visualiser, any of our floors can be used in one of 45 different room scenes – from kitchens and bedrooms to office spaces and boardrooms – and you can customize the direction of the flooring.

These tools have been developed to help customers to make their final decisions with confidence.



Room Visualiser

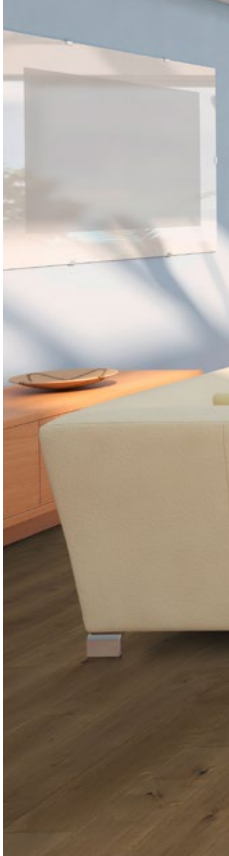


Room Planner

BAHAMAS

SPECIFICATIONS:

Width	190 240 290mm 7 ½" 9 ½" 11 ½"
Length	1820 2130 2450mm 72" 84" 96"
Thickness	14.2mm or 22mm 9/16" or 7/8"
Installation Type	Tongue & Groove or 5G®







BEQUIA

SPECIFICATIONS

Width	190 240 290mm 7 1/2" 9 1/2" 11 1/2"
-------	------------------------------------------------

Length	1820 2130 2450mm 72" 84" 96"
--------	-----------------------------------------

Thickness	14.2mm or 22mm 9/16" or 7/8"
-----------	---------------------------------

Installation Type	Tongue & Groove or 5G®
----------------------	---------------------------

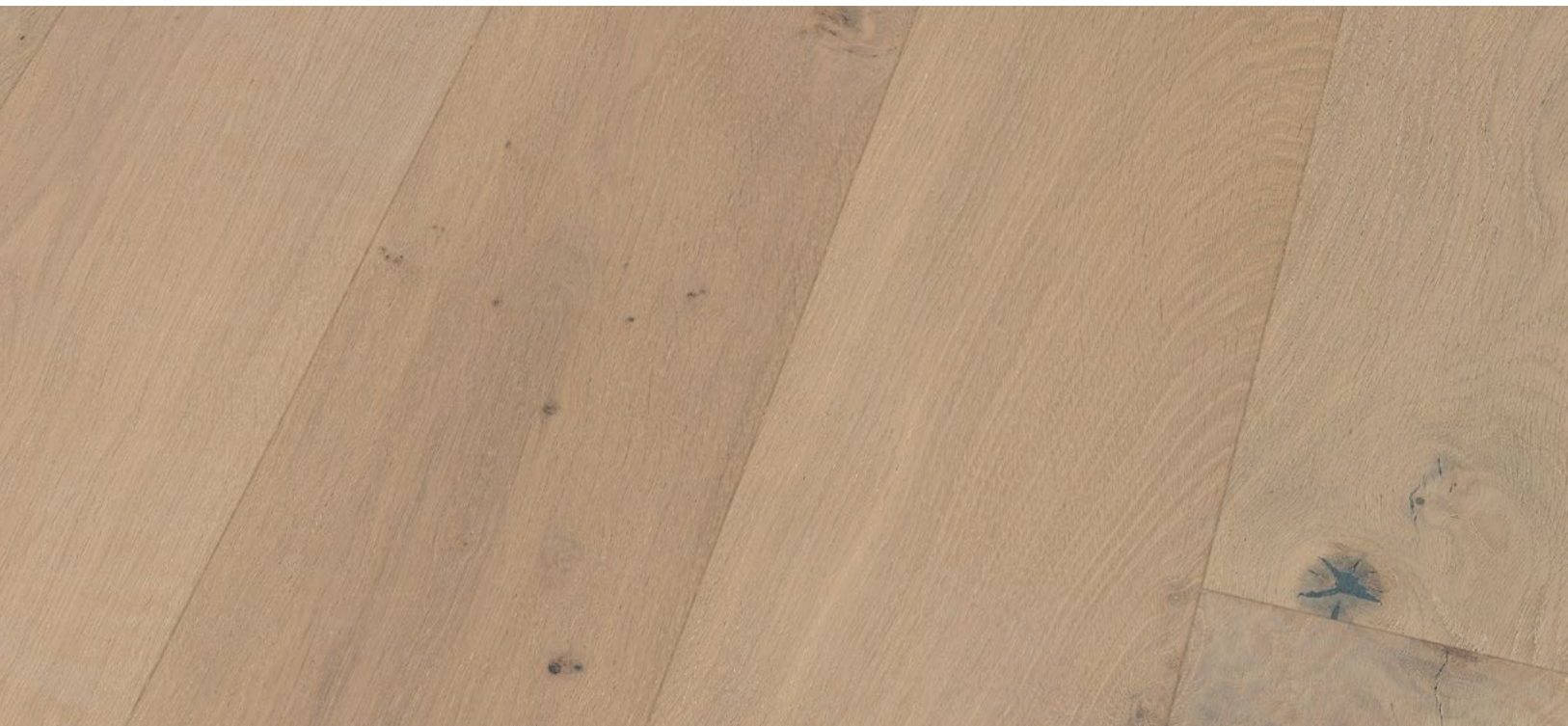


CAYMAN

SPECIFICATIONS:

Width	190 240 290mm 7 ½" 9 ½" 11 ½"
Length	1820 2130 2450mm 72" 84" 96"
Thickness	14.2mm or 22mm 9/16" or 7/8"
Installation Type	Tongue & Groove or 5G®







CUBA

SPECIFICATIONS

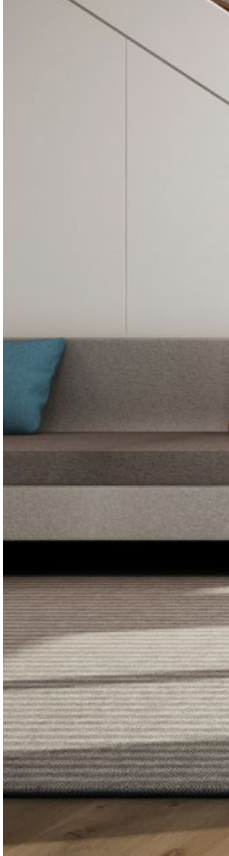
Width	190 240 290mm 7 1/2" 9 1/2" 11 1/2"
Length	1820 2130 2450mm 72" 84" 96"
Thickness	14.2mm or 22mm 9/16" or 7/8"
Installation Type	Tongue & Groove or 5G®



CURACAO

SPECIFICATIONS:

Width	190 240 290mm 7 ½" 9 ½" 11 ½"
Length	1820 2130 2450mm 72" 84" 96"
Thickness	14.2mm or 22mm 9/16" or 7/8"
Installation Type	Tongue & Groove or 5G®







GRENADA

SPECIFICATIONS

Width	190 240 290mm 7 1/2" 9 1/2" 11 1/2"
Length	1820 2130 2450mm 72" 84" 96"
Thickness	14.2mm or 22mm 9/16" or 7/8"
Installation Type	Tongue & Groove or 5G®



JAMAICA

SPECIFICATIONS:

Width	190 240 290mm 7 ½" 9 ½" 11 ½"
Length	1820 2130 2450mm 72" 84" 96"
Thickness	14.2mm or 22mm 9/16" or 7/8"
Installation Type	Tongue & Groove or 5G®







MAYREAU

SPECIFICATIONS

Width	190 240 290mm 7 1/2" 9 1/2" 11 1/2"
Length	1820 2130 2450mm 72" 84" 96"
Thickness	14.2mm or 22mm 9/16" or 7/8"
Installation Type	Tongue & Groove or 5G®



MONTSERRAT

SPECIFICATIONS:

Width	190 240 290mm 7 ½" 9 ½" 11 ½"
Length	1820 2130 2450mm 72" 84" 96"
Thickness	14.2mm or 22mm 9/16" or 7/8"
Installation Type	Tongue & Groove or 5G®







MUSTIQUE

SPECIFICATIONS

Width	190 240 290mm 7 ½" 9 ½" 11 ½"
Length	1820 2130 2450mm 72" 84" 96"
Thickness	14.2mm or 22mm 9/16" or 7/8"
Installation Type	Tongue & Groove or 5G®



NEVIS

SPECIFICATIONS:

Width	190 240 290mm 7 ½" 9 ½" 11 ½"
Length	1820 2130 2450mm 72" 84" 96"
Thickness	14.2mm or 22mm 9/16" or 7/8"
Installation Type	Tongue & Groove or 5G®







PUERTO RICO

SPECIFICATIONS

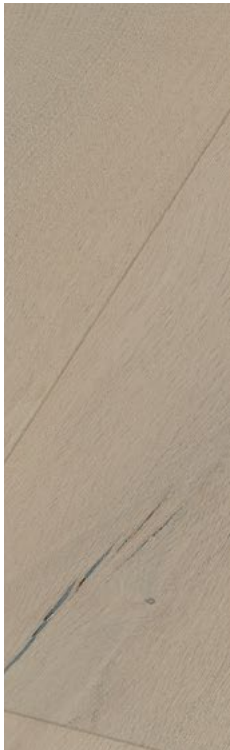
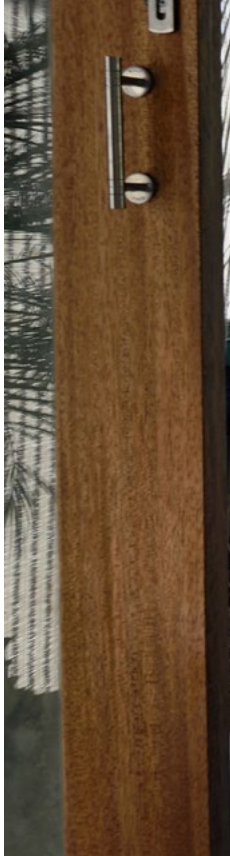
Width	190 240 290mm 7 1/2" 9 1/2" 11 1/2"
Length	1820 2130 2450mm 72" 84" 96"
Thickness	14.2mm or 22mm 9/16" or 7/8"
Installation Type	Tongue & Groove or 5G®

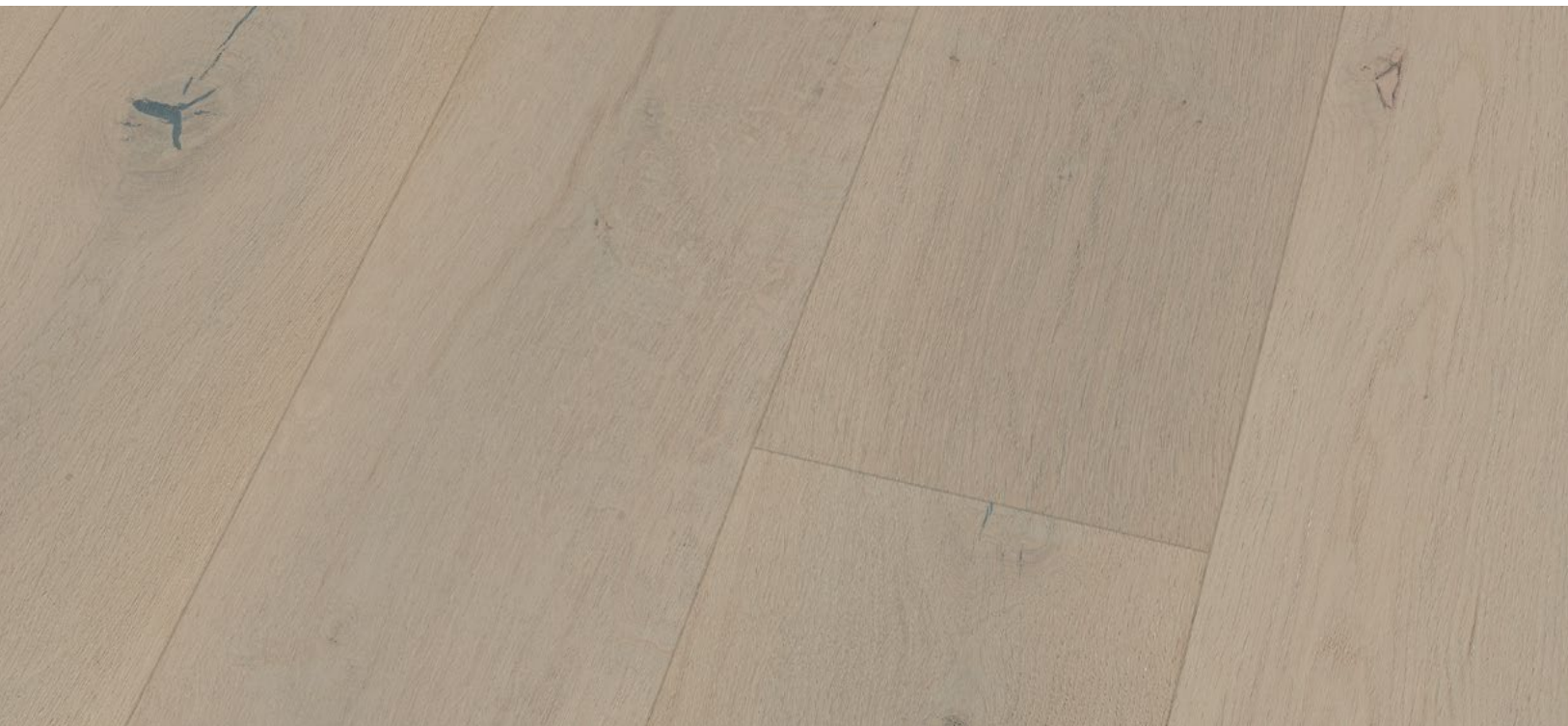


ST BARTHELEMY

SPECIFICATIONS:

Width	190 240 290mm 7 ½" 9 ½" 11 ½"
Length	1820 2130 2450mm 72" 84" 96"
Thickness	14.2mm or 22mm 9/16" or 7/8"
Installation Type	Tongue & Groove or 5G®







ST BARTS

SPECIFICATIONS

Width	190 240 290mm 7 ½" 9 ½" 11 ½"
Length	1820 2130 2450mm 72" 84" 96"
Thickness	14.2mm or 22mm 9/16" or 7/8"
Installation Type	Tongue & Groove or 5G®



ST KITTS

SPECIFICATIONS:

Width	190 240 290mm 7 ½" 9 ½" 11 ½"
Length	1820 2130 2450mm 72" 84" 96"
Thickness	14.2mm or 22mm 9/16" or 7/8"
Installation Type	Tongue & Groove or 5G®





35





ST MARTIN

SPECIFICATIONS

Width	190 240 290mm 7 1/2" 9 1/2" 11 1/2"
Length	1820 2130 2450mm 72" 84" 96"
Thickness	14.2mm or 22mm 9/16" or 7/8"
Installation Type	Tongue & Groove or 5G®



ST VINCENT

SPECIFICATIONS:

Width	190 240 290mm 7 ½" 9 ½" 11 ½"
Length	1820 2130 2450mm 72" 84" 96"
Thickness	14.2mm or 22mm 9/16" or 7/8"
Installation Type	Tongue & Groove or 5G®







TORTOLA

SPECIFICATIONS

Width	190 240 290mm 7 1/2" 9 1/2" 11 1/2"
Length	1820 2130 2450mm 72" 84" 96"
Thickness	14.2mm or 22mm 9/16" or 7/8"
Installation Type	Tongue & Groove or 5G®





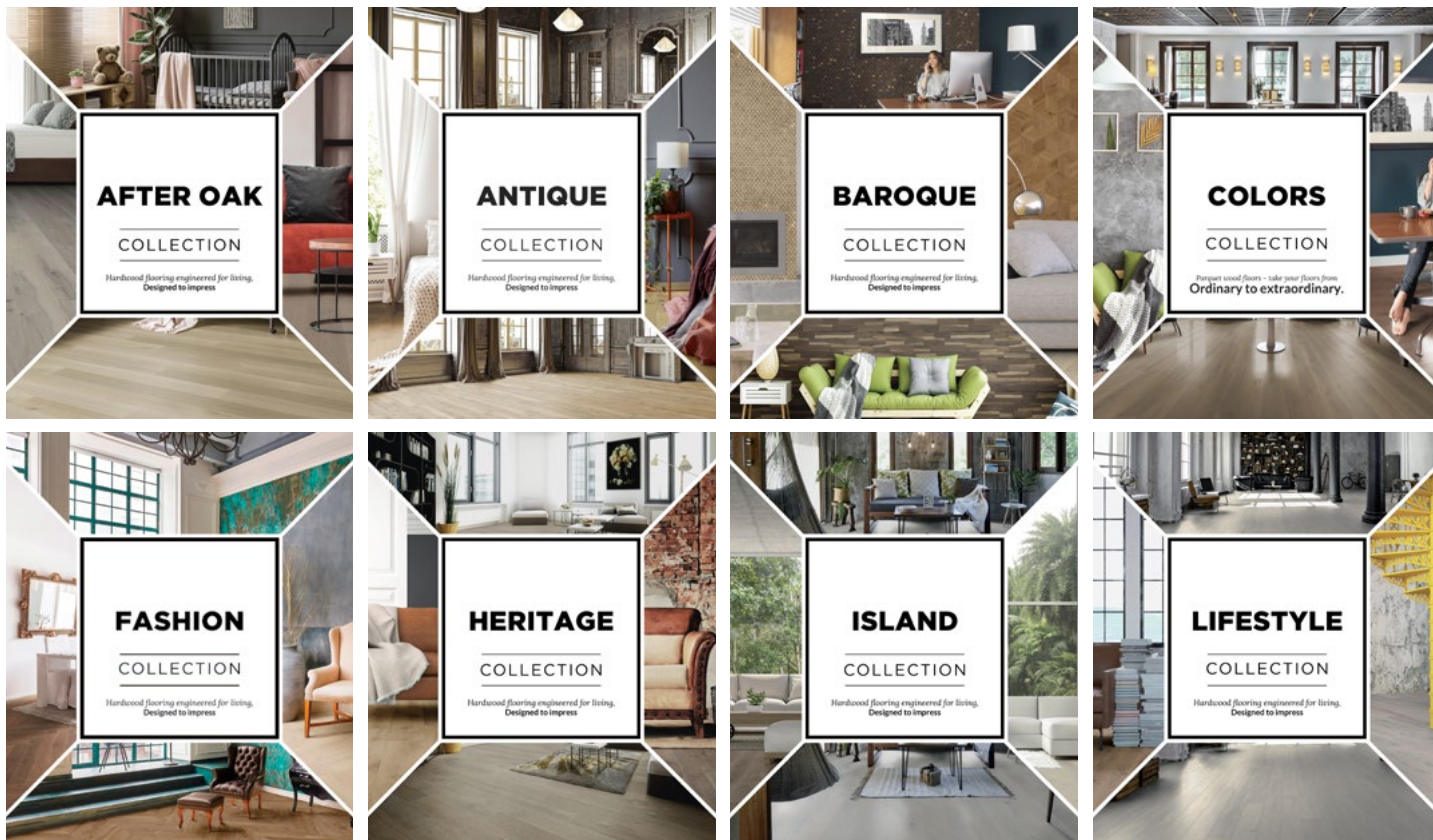
COMPLIANCE & CERTIFICATION

Our products have been tested and certified by international bodies:

- 25 years limited residential warranty
- FSC® & PEFC™ available on request
- CE-European Conformity
- VOC “Emissions dans l’air interieur”
- FloorScore
- No added Formaldehyde
- Earn BREEAM® credits
- LEED® v4.1
- SVLK/FLEGT Certified

COATING – Bona®

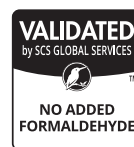
ADHESIVE – AkzoNobel



Printed material in this catalogue is provided as a reference only, whilst we have made every effort to ensure the colours and wood characteristics displayed are as accurate as possible these images may vary from the actual product.

Our General Terms & Conditions, technical specifications, details on warranty and all compliance reports are available upon request.

Please visit our website – About Us for further details www.forestrytimber.com



**Printed material in this catalogue is provided as a reference only.
Colour and wood characteristics may vary from actual product.**

All images and information in this catalogue are copyrighted. Any form of reproduction is a violation of copyright law and is strictly prohibited. You may NOT distribute, transmit, reuse, repost, or use the content in this catalogue for public or commercial purposes – including the text and images – without written permission.

© 2022 Woodline Parquetry
www.woodlineparquetry.com

