



ANTIQUE

COLLECTION

Parquet wood floors - take your floors from
Ordinary to extraordinary.

Our vintage **ANTIQUE COLLECTION** of engineered hardwood flooring is made from either Western European Oak or Pecan. Each plank has been hand-crafted and carefully honed to accentuate the wood's natural textured surface which gives it the depth and dimension of a time-loved floor. This collection is characterised by the beautiful, big knots which create unique character and ambience. The colour palette ranges from white/ blond and greys through to almost black.





SUPERIOR STABILITY & CONSISTENCY

HEVEA BRASILIENSIS (Rubberwood) is a plantation hardwood timber that has similar density to White Oak. It is well-known that Hevea core in 3 layered engineered floors is stronger and more reliable than other species used in the market due to its physical and mechanical strength.

RESPONSIBLY HARVESTED & MANUFACTURED

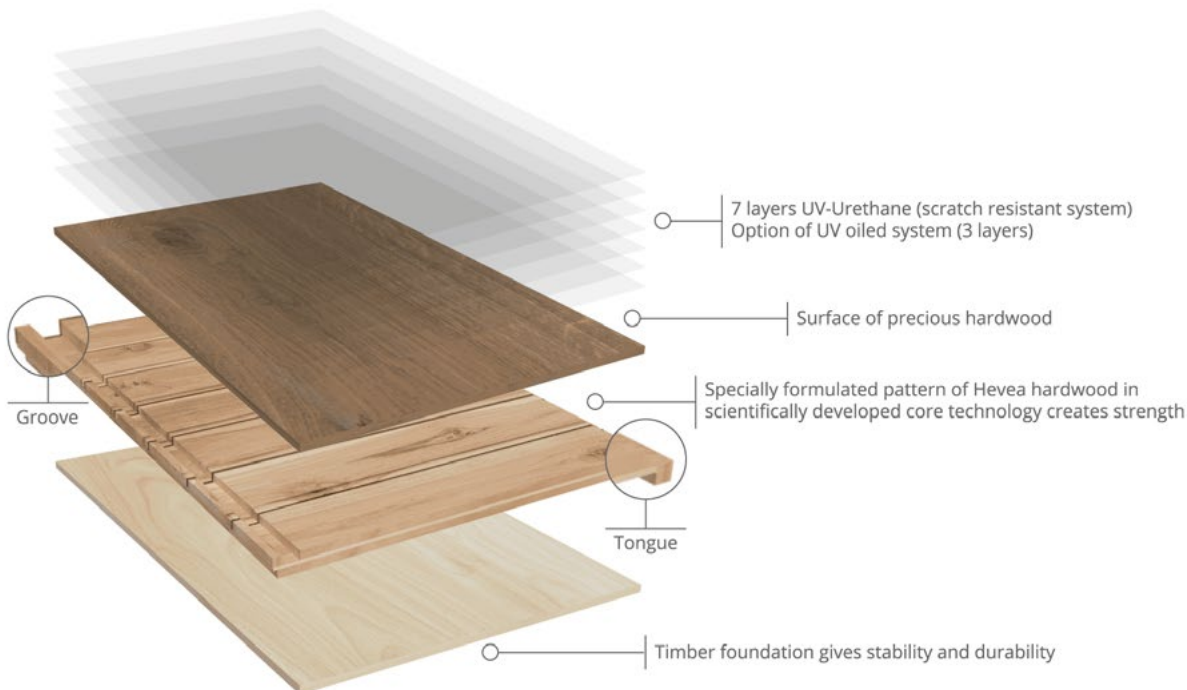
Our company employs sound environmental care policies by using renewable resources and VOC safe components. We take great pride in being able to offer everyone a totally safe, green product. Our 3 layered engineered flooring composition encompasses the use of legally compliant and renewable timber resources.

WORLD CLASS FINISHING

The strength of our technology and production processes allow us to distribute and install our timber flooring products worldwide with confidence, even in extreme climates. This ensures a look and feel to suit your design preference and needs that will last the lifetime of the floor.

What Makes Us Unique

- We are a family-owned business with strong worldwide partnerships
- Responsible procurement processes and legality of all raw materials
- Flexible, reliable customer service and production times
- Our planks are available in up to six different widths and lengths, with the option of three thicknesses
- Hevea Brasiliensis is the core layer of each plank; providing greater dimensional stability and can withstand external pressure to change, such as fluctuations in temperature and humidity. This ensures that the all-important core in our multi-layer engineered floors is stronger and more reliable than other species.
- Available in Tongue & Groove or 5G® Vålinge
- Suitable for underfloor heating
- Zero Emissions
- FSC®/PEFC™/BREEAM® & LEED® v4.1 (options available)
- World leader in utilising reactive stain technology



TRY OUT OUR Interactive Floor Applications

7

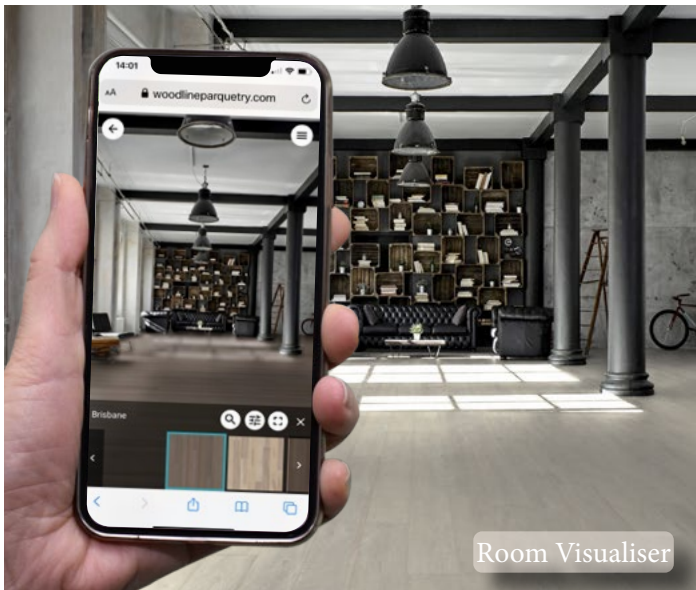
When selecting our Antique Floors, we recommend that you try out our **Room Visualiser** and **Room Planner** viewable on woodlineparquetry.com

Woodline Parquetry's revolutionary tools will help clients envision the floor that best suits their space:

The **Room Visualiser** – accessible via all of our websites – allows anyone with a mobile device to take a photo of any room and apply any one of our Antique Collection floors. The app allows people to choose any of our floors, to lay the floor at different angles, and save and share those images with others.

Our **Room Planner** is another great tool to help your clients get an idea of how our floors will look in a variety of settings. As with the Room Visualiser, any of our floors can be used in one of 45 different room scenes – from kitchens and bedrooms to office spaces and boardrooms – and you can customize the direction of the flooring.

These tools have been developed to help customers to make their final decisions with confidence.



Room Visualiser



Room Planner

SPECIFICATIONS:

Width	190/240/290mm 7 1/2"/9 1/2"/11 1/2"
Length	1820/2130/2450mm 72"/84"/96"
Thickness	14.2mm or 22mm 9/16" or 7/8"
Installation Type	Tongue & Groove or 5G®





SPECIFICATIONS:

Width	190/240/290mm 7 1/2"/9 1/2"/11 1/2"
Length	1820/2130/2450mm 72"/84"/96"
Thickness	14.2mm or 22mm 9/16" or 7/8"
Installation Type	Tongue & Groove or 5G®





SPECIFICATIONS:

Width	190/240/290mm 7 1/2"/9 1/2"/11 1/2"
Length	1820/2130/2450mm 72"/84"/96"
Thickness	14.2mm or 22mm 9/16" or 7/8"
Installation Type	Tongue & Groove or 5G®

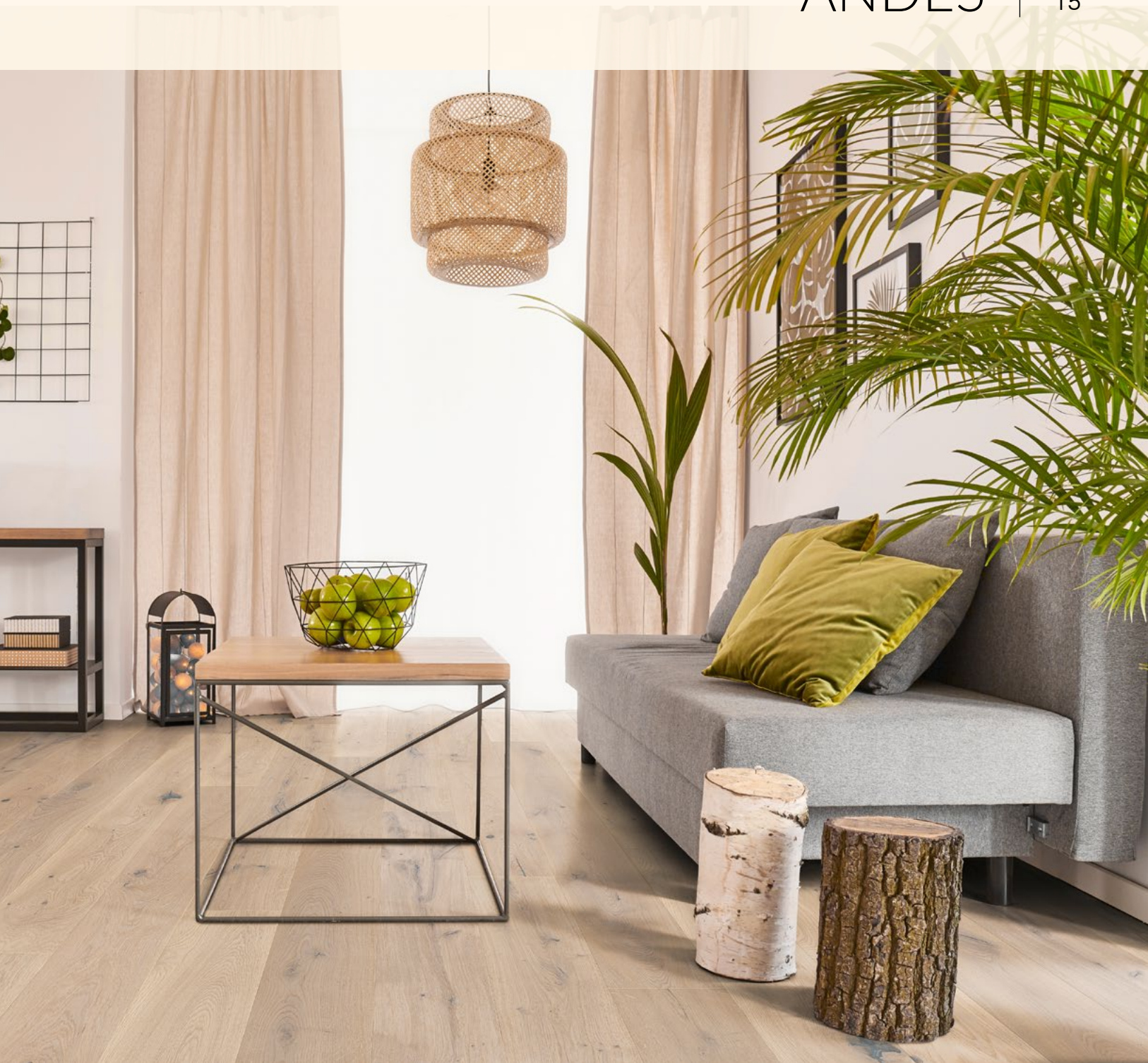




SPECIFICATIONS:

Width	190/240/290mm 7 1/2"/9 1/2"/11 1/2"
Length	1820/2130/2450mm 72"/84"/96"
Thickness	14.2mm or 22mm 9/16" or 7/8"
Installation Type	Tongue & Groove or 5G®





SPECIFICATIONS:

Width	190/240/290mm 7 1/2"/9 1/2"/11 1/2"
Length	1820/2130/2450mm 72"/84"/96"
Thickness	14.2mm or 22mm 9/16" or 7/8"
Installation Type	Tongue & Groove or 5G®





SPECIFICATIONS:

Width	190/240/290mm 7 1/2"/9 1/2"/11 1/2"
Length	1820/2130/2450mm 72"/84"/96"
Thickness	14.2mm or 22mm 9/16" or 7/8"
Installation Type	Tongue & Groove or 5G®





SPECIFICATIONS:

Width	190/240/290mm 7 1/2"/9 1/2"/11 1/2"
Length	1820/2130/2450mm 72"/84"/96"
Thickness	14.2mm or 22mm 9/16" or 7/8"
Installation Type	Tongue & Groove or 5G®





SPECIFICATIONS:

Width	190/240/290mm 7 1/2"/9 1/2"/11 1/2"
Length	1820/2130/2450mm 72"/84"/96"
Thickness	14.2mm or 22mm 9/16" or 7/8"
Installation Type	Tongue & Groove or 5G®





SPECIFICATIONS:

Width	190/240/290mm 7 1/2"/9 1/2"/11 1/2"
Length	1820/2130/2450mm 72"/84"/96"
Thickness	14.2mm or 22mm 9/16" or 7/8"
Installation Type	Tongue & Groove or 5G®





SPECIFICATIONS:

Width	190/240/290mm 7 1/2"/9 1/2"/11 1/2"
Length	1820/2130/2450mm 72"/84"/96"
Thickness	14.2mm or 22mm 9/16" or 7/8"
Installation Type	Tongue & Groove or 5G®





SPECIFICATIONS:

Width	190/240/290mm 7 1/2"/9 1/2"/11 1/2"
Length	1820/2130/2450mm 72"/84"/96"
Thickness	14.2mm or 22mm 9/16" or 7/8"
Installation Type	Tongue & Groove or 5G®





SPECIFICATIONS:

Width	190/240/290mm 7 1/2"/9 1/2"/11 1/2"
Length	1820/2130/2450mm 72"/84"/96"
Thickness	14.2mm or 22mm 9/16" or 7/8"
Installation Type	Tongue & Groove or 5G®





SPECIFICATIONS:

Width	190/240/290mm 7 1/2"/9 1/2"/11 1/2"
Length	1820/2130/2450mm 72"/84"/96"
Thickness	14.2mm or 22mm 9/16" or 7/8"
Installation Type	Tongue & Groove or 5G®





SPECIFICATIONS:

Width	190/240/290mm 7 1/2"/9 1/2"/11 1/2"
Length	1820/2130/2450mm 72"/84"/96"
Thickness	14.2mm or 22mm 9/16" or 7/8"
Installation Type	Tongue & Groove or 5G®





SPECIFICATIONS:

Width	190/240/290mm 7 1/2"/9 1/2"/11 1/2"
Length	1820/2130/2450mm 72"/84"/96"
Thickness	14.2mm or 22mm 9/16" or 7/8"
Installation Type	Tongue & Groove or 5G®





SPECIFICATIONS:

Width	190/240/290mm 7 1/2"/9 1/2"/11 1/2"
Length	1820/2130/2450mm 72"/84"/96"
Thickness	14.2mm or 22mm 9/16" or 7/8"
Installation Type	Tongue & Groove or 5G®





SPECIFICATIONS:

Width	190/240/290mm 7 1/2"/9 1/2"/11 1/2"
Length	1820/2130/2450mm 72"/84"/96"
Thickness	14.2mm or 22mm 9/16" or 7/8"
Installation Type	Tongue & Groove or 5G®





SPECIFICATIONS:

Width	190/240/290mm 7 1/2"/9 1/2"/11 1/2"
Length	1820/2130/2450mm 72"/84"/96"
Thickness	14.2mm or 22mm 9/16" or 7/8"
Installation Type	Tongue & Groove or 5G®





SPECIFICATIONS:

Width	190/240/290mm 7 1/2"/9 1/2"/11 1/2"
Length	1820/2130/2450mm 72"/84"/96"
Thickness	14.2mm or 22mm 9/16" or 7/8"
Installation Type	Tongue & Groove or 5G®





SPECIFICATIONS:

Width	190/240/290mm 7 1/2"/9 1/2"/11 1/2"
Length	1820/2130/2450mm 72"/84"/96"
Thickness	14.2mm or 22mm 9/16" or 7/8"
Installation Type	Tongue & Groove or 5G®





SPECIFICATIONS:

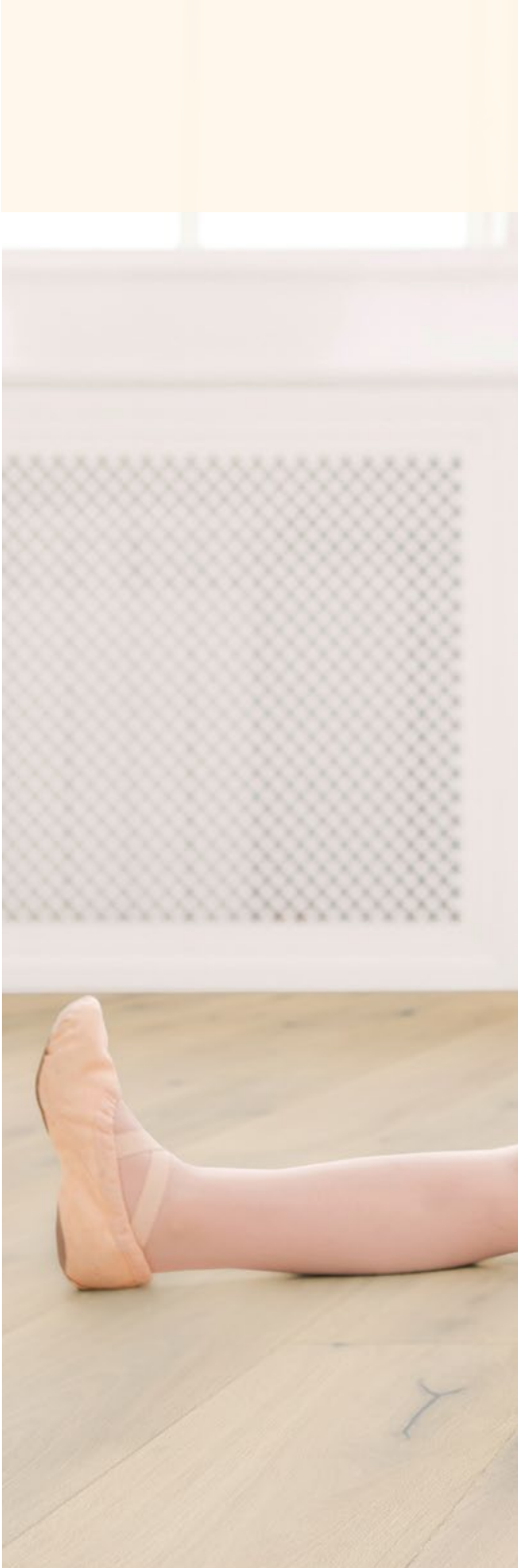
Width	190/240/290mm 7 1/2"/9 1/2"/11 1/2"
Length	1820/2130/2450mm 72"/84"/96"
Thickness	14.2mm or 22mm 9/16" or 7/8"
Installation Type	Tongue & Groove or 5G®





SPECIFICATIONS:

Width	190/240/290mm 7 1/2"/9 1/2"/11 1/2"
Length	1820/2130/2450mm 72"/84"/96"
Thickness	14.2mm or 22mm 9/16" or 7/8"
Installation Type	Tongue & Groove or 5G®





SPECIFICATIONS:

Width	190/240/290mm 7 1/2"/9 1/2"/11 1/2"
Length	1820/2130/2450mm 72"/84"/96"
Thickness	14.2mm or 22mm 9/16" or 7/8"
Installation Type	Tongue & Groove or 5G®





SPECIFICATIONS:

Width	190/240/290mm 7 1/2"/9 1/2"/11 1/2"
Length	1820/2130/2450mm 72"/84"/96"
Thickness	14.2mm or 22mm 9/16" or 7/8"
Installation Type	Tongue & Groove or 5G®





SPECIFICATIONS:

Width	190/240/290mm 7 1/2"/9 1/2"/11 1/2"
Length	1820/2130/2450mm 72"/84"/96"
Thickness	14.2mm or 22mm 9/16" or 7/8"
Installation Type	Tongue & Groove or 5G®





SPECIFICATIONS:

Width	190/240/290mm 7 1/2"/9 1/2"/11 1/2"
Length	1820/2130/2450mm 72"/84"/96"
Thickness	14.2mm or 22mm 9/16" or 7/8"
Installation Type	Tongue & Groove or 5G®





SPECIFICATIONS:

Width	190/240/290mm 7 1/2"/9 1/2"/11 1/2"
Length	1820/2130/2450mm 72"/84"/96"
Thickness	14.2mm or 22mm 9/16" or 7/8"
Installation Type	Tongue & Groove or 5G®





SPECIFICATIONS:

Width	190/240/290mm 7 1/2"/9 1/2"/11 1/2"
Length	1820/2130/2450mm 72"/84"/96"
Thickness	14.2mm or 22mm 9/16" or 7/8"
Installation Type	Tongue & Groove or 5G®





SPECIFICATIONS:

Width	190/240/290mm 7 1/2"/9 1/2"/11 1/2"
Length	1820/2130/2450mm 72"/84"/96"
Thickness	14.2mm or 22mm 9/16" or 7/8"
Installation Type	Tongue & Groove or 5G®





SPECIFICATIONS:

Width	190/240/290mm 7 1/2"/9 1/2"/11 1/2"
Length	1820/2130/2450mm 72"/84"/96"
Thickness	14.2mm or 22mm 9/16" or 7/8"
Installation Type	Tongue & Groove or 5G®





SPECIFICATIONS:

Width	190/240/290mm 7 1/2"/9 1/2"/11 1/2"
Length	1820/2130/2450mm 72"/84"/96"
Thickness	14.2mm or 22mm 9/16" or 7/8"
Installation Type	Tongue & Groove or 5G®





SPECIFICATIONS:

Width	190/240/290mm 7 1/2"/9 1/2"/11 1/2"
Length	1820/2130/2450mm 72"/84"/96"
Thickness	14.2mm or 22mm 9/16" or 7/8"
Installation Type	Tongue & Groove or 5G®





SPECIFICATIONS:

Width	190/240/290mm 7 1/2"/9 1/2"/11 1/2"
Length	1820/2130/2450mm 72"/84"/96"
Thickness	14.2mm or 22mm 9/16" or 7/8"
Installation Type	Tongue & Groove or 5G®





SPECIFICATIONS:

Width	190/240/290mm 7 1/2"/9 1/2"/11 1/2"
Length	1820/2130/2450mm 72"/84"/96"
Thickness	14.2mm or 22mm 9/16" or 7/8"
Installation Type	Tongue & Groove or 5G®



TABLE MOUNTAIN

75



SPECIFICATIONS:

Width	190/240/290mm 7 1/2"/9 1/2"/11 1/2"
Length	1820/2130/2450mm 72"/84"/96"
Thickness	14.2mm or 22mm 9/16" or 7/8"
Installation Type	Tongue & Groove or 5G®





SPECIFICATIONS:

Width	190/240/290mm 7 1/2"/9 1/2"/11 1/2"
Length	1820/2130/2450mm 72"/84"/96"
Thickness	14.2mm or 22mm 9/16" or 7/8"
Installation Type	Tongue & Groove or 5G®





SPECIFICATIONS:

Width	190/240/290mm 7 1/2"/9 1/2"/11 1/2"
Length	1820/2130/2450mm 72"/84"/96"
Thickness	14.2mm or 22mm 9/16" or 7/8"
Installation Type	Tongue & Groove or 5G®





Our Engineered wood floors are of the highest quality which are finished with either UV lacquer or UV Oil as well as being formaldehyde free. We recommend regular maintenance to protect and to preserve the surface.

Any moisture spillage should be immediately cleaned with a dry cloth. Do not allow any moisture to pool on the surface, as this will cause damage to the floor.





Daily cleaning should be done with a vacuum cleaner (with felt pads fitted to avoid scratching), a static mop or a smooth broom. Any sand, dirt or grit should be immediately removed as it causes scratches and damages the floor's surface.

Whenever necessary, the floor surface can also be cleaned with a damp mop or a special polish to remove any stains or grease.

It is highly recommended to place felt pads under furniture or chairs to protect the floor surface.

Additional lacquering is not recommended for any ready-made finished engineered floors.

We recommend that the floor be recoated with an oil refresher product (WOCA or Bona) every 3 to 6 months depending on the condition of the floor.

Wood is also affected by UV light and will change in colour when exposed for long durations. Carpets or rugs should not be placed on the floor immediately after installation allow for a few weeks.



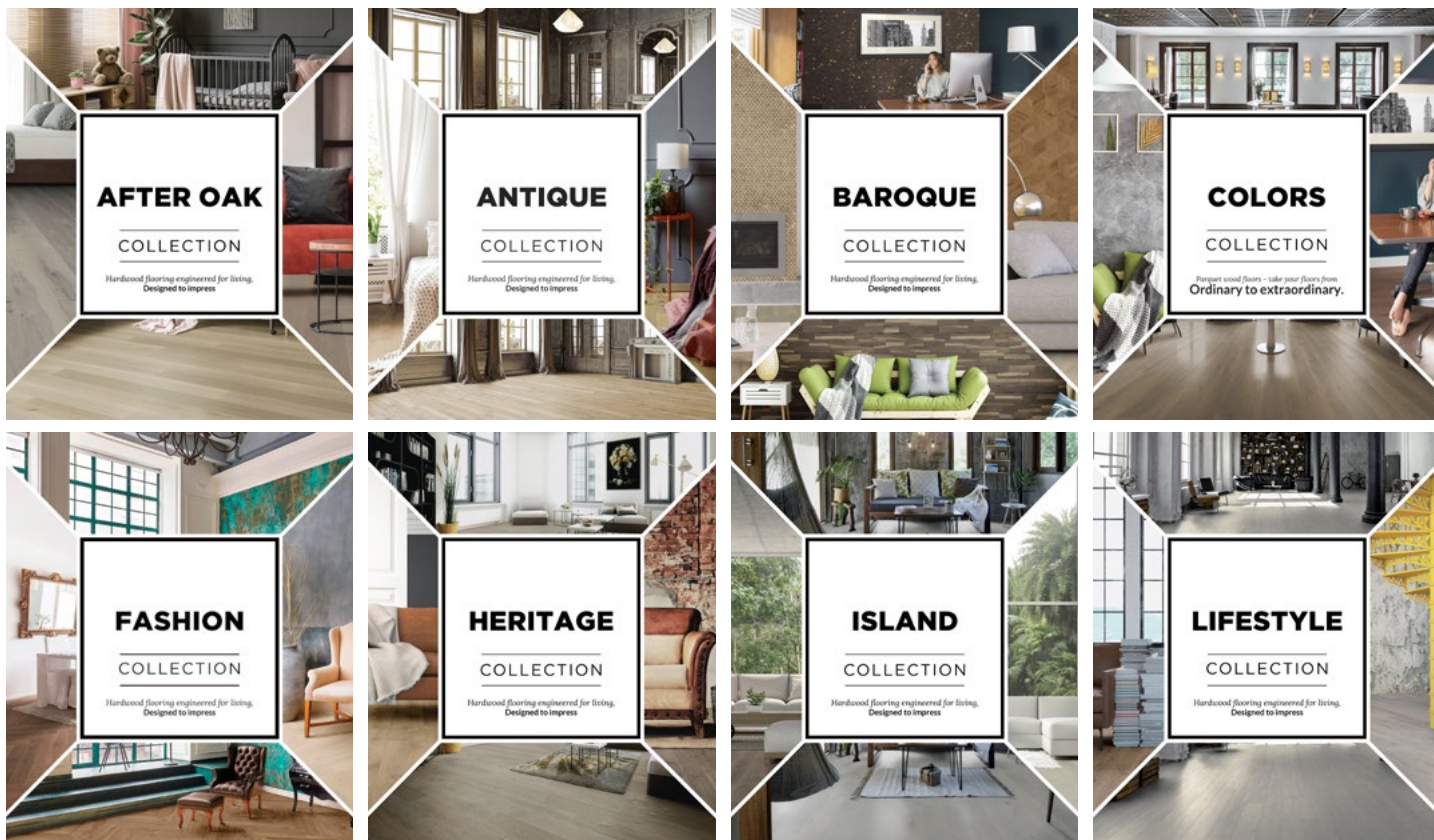
COMPLIANCE & CERTIFICATION

Our products have been tested and certified by international bodies:

- 25 years limited residential warranty
- FSC® & PEFC™ available on request
- CE-European Conformity
- VOC “Emissions dans l’air intérieur”
- FloorScore
- No added Formaldehyde
- Earn BREEAM® credits
- LEED® v4.1
- SVLK/FLEGT Certified

COATING – Bona®

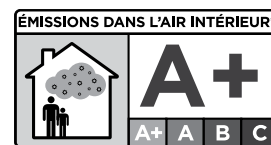
ADHESIVE – AkzoNobel



Printed material in this catalogue is provided as a reference only, whilst we have made every effort to ensure the colours and wood characteristics displayed are as accurate as possible these images may vary from the actual product.

Our General Terms & Conditions, technical specifications, details on warranty and all compliance reports are available upon request.

Please visit our website – About Us for further details www.forestrytimber.com



www.elyseumfertigparket.com

www.floorartparquetry.com

www.siennaparquetry.com

www.timbertop.eu

www.woodlineparquetry.com

**Printed material in this catalogue is provided as a reference only.
Colour and wood characteristics may vary from actual product.**

All images and information in this catalogue are copyrighted. Any form of reproduction is a violation of copyright law and is strictly prohibited. You may NOT distribute, transmit, reuse, repost, or use the content in this catalogue for public or commercial purposes – including the text and images – without written permission.

© 2022 Woodline Parquetry
www.woodlineparquetry.com

