



AFTER OAK

COLLECTION

Parquet wood floors - take your floors from
Ordinary to extraordinary.

After Oak

Collection

Our **After Oak Collection** of engineered hardwood flooring offers an extensive colour palette ranging from light natural colours to midnight black. This Collection is available in three distinctive wood options; Tasmanian Oak, a eucalyptus species sourced from Australia, Western European Ash and American Pecan. Each of the three woods creates room ambience that is particular to the species and evokes a contemporary yet timeless look and feel.





SUPERIOR STABILITY & CONSISTENCY

HEVEA BRASILIENSIS (Rubberwood) is a plantation hardwood timber that has similar density to White Oak. It is well-known that Hevea core in 3 layered engineered floors is stronger and more reliable than other species used in the market due to its physical and mechanical strength.

RESPONSIBLY HARVESTED & MANUFACTURED

Our company employs sound environmental care policies by using renewable resources and VOC safe components. We take great pride in being able to offer everyone a totally safe, green product. Our 3 layered engineered flooring composition encompasses the use of legally compliant and renewable timber resources.

WORLD CLASS FINISHING

The strength of our technology and production processes allow us to distribute and install our timber flooring products worldwide with confidence, even in extreme climates. This ensures a look and feel to suit your design preference and needs that will last the lifetime of the floor.

TASMANIAN

ASH

PECAN

TRY OUT OUR Interactive Floor Applications

7

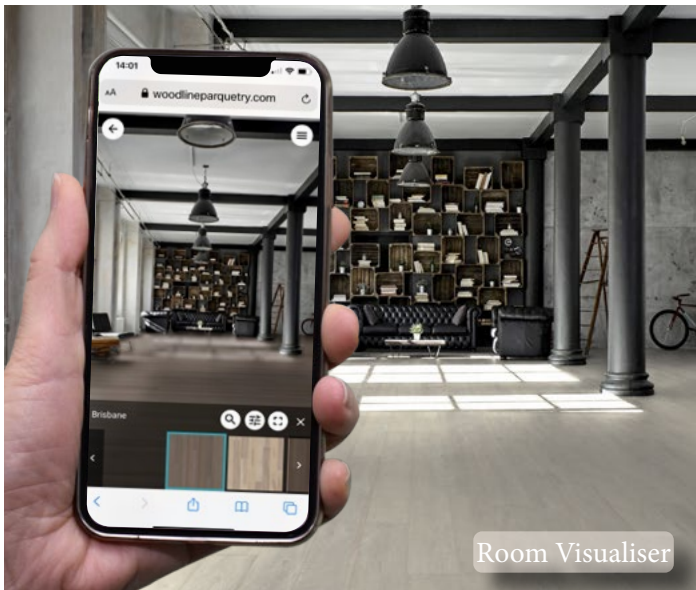
When selecting our After Oak Floors, we recommend that you try out our **Room Visualiser** and **Room Planner** viewable on woodlineparquetry.com

Woodline Parquetry's revolutionary tools will help clients envision the floor that best suits their space:

The **Room Visualiser** – accessible via all of our websites – allows anyone with a mobile device to take a photo of any room and apply any one of our After Oak Collection floors. The app allows people to choose any of our floors, to lay the floor at different angles, and save and share those images with others.

Our **Room Planner** is another great tool to help your clients get an idea of how our floors will look in a variety of settings. As with the Room Visualiser, any of our floors can be used in one of 45 different room scenes – from kitchens and bedrooms to office spaces and boardrooms – and you can customize the direction of the flooring.

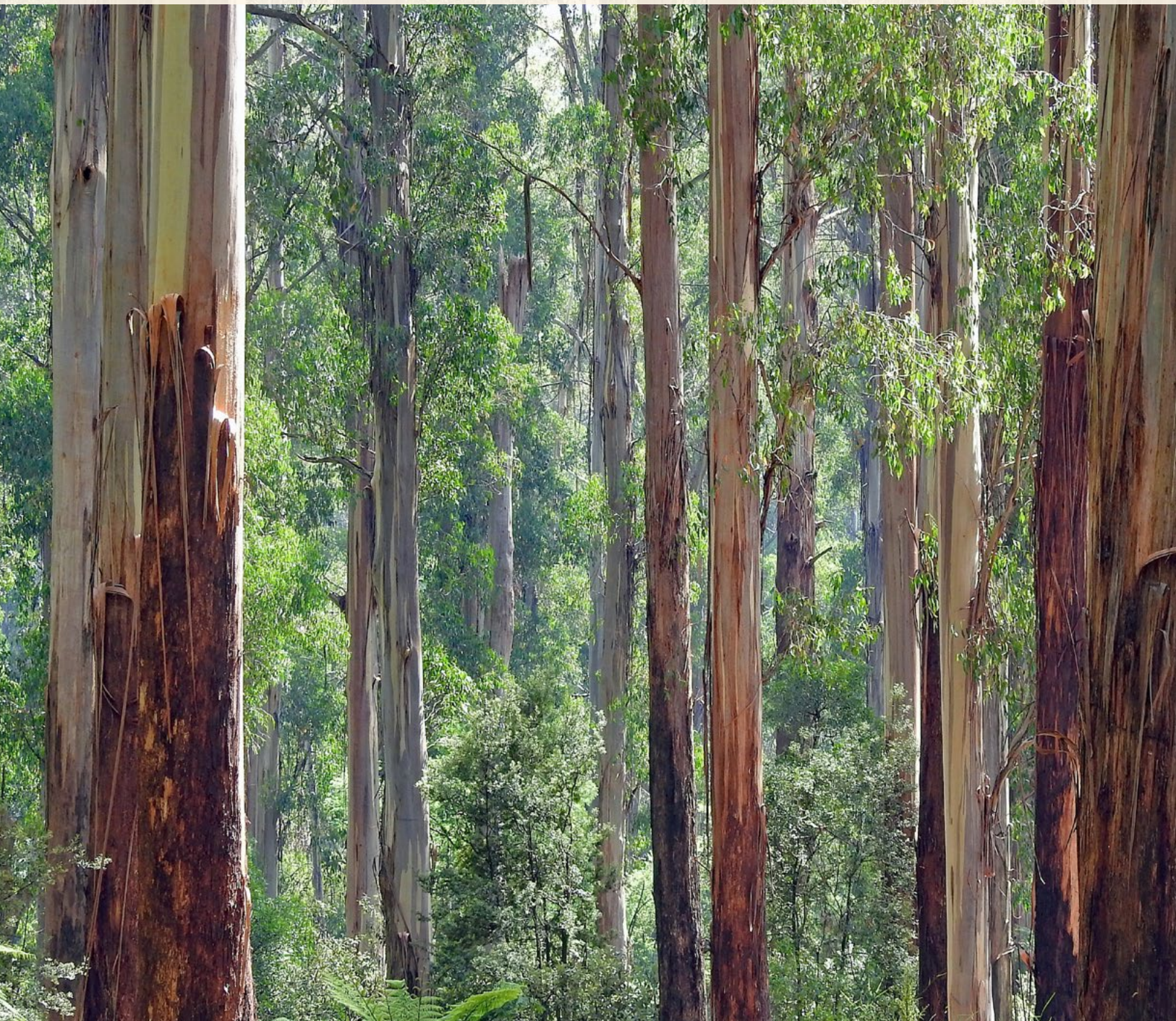
These tools have been developed to help customers to make their final decisions with confidence.



Room Visualiser



Room Planner





TASMANIAN OAK

Tasmanian Oak is the name used to describe three nearly identical species of wood: *Eucalyptus regnans*, *Eucalyptus obliqua*, and *Eucalyptus delegatensis* – timber indigenous to Tasmania, Victoria, and New South Wales in Australia.

A versatile, sturdy, and stable timber with a smooth and lustrous finish, unfinished Tasmanian Oak boasts a fairly straight grain with natural variations in texture and colour – running from light to a reddish brown interspersed with pink and cream tones.

Tasmanian Oak takes both traditional wood stain and, more so, our proprietary reactive technologies beautifully – resulting in a beautiful finish that will last for decades.

TASMANIAN

SPECIFICATIONS:

Width	165mm 6 1/2"
Length	2130mm 84"
Thickness	14.2mm or 22mm 9/16" or 7/8"
Installation Type	Tongue & Groove or 5G®





TASMANIAN

SPECIFICATIONS:

Width	165mm 6 1/2"
Length	2130mm 84"
Thickness	14.2mm or 22mm 9/16" or 7/8"
Installation Type	Tongue & Groove or 5G®





TASMANIAN

SPECIFICATIONS:

Width	165mm 6 1/2"
Length	2130mm 84"
Thickness	14.2mm or 22mm 9/16" or 7/8"
Installation Type	Tongue & Groove or 5G®





TASMANIAN

SPECIFICATIONS:

Width	165mm 6 1/2"
Length	2130mm 84"
Thickness	14.2mm or 22mm 9/16" or 7/8"
Installation Type	Tongue & Groove or 5G [®]





TASMANIAN

SPECIFICATIONS:

Width	165mm 6 1/2"
Length	2130mm 84"
Thickness	14.2mm or 22mm 9/16" or 7/8"
Installation Type	Tongue & Groove or 5G®





TASMANIAN

SPECIFICATIONS:

Width	165mm 6 1/2"
Length	2130mm 84"
Thickness	14.2mm or 22mm 9/16" or 7/8"
Installation Type	Tongue & Groove or 5G®





TASMANIAN

SPECIFICATIONS:

Width	165mm 6 1/2"
Length	2130mm 84"
Thickness	14.2mm or 22mm 9/16" or 7/8"
Installation Type	Tongue & Groove or 5G®





TASMANIAN

SPECIFICATIONS:

Width	165mm 6 1/2"
Length	2130mm 84"
Thickness	14.2mm or 22mm 9/16" or 7/8"
Installation Type	Tongue & Groove or 5G [®]





TASMANIAN

SPECIFICATIONS:

Width	165mm 6 1/2"
Length	2130mm 84"
Thickness	14.2mm or 22mm 9/16" or 7/8"
Installation Type	Tongue & Groove or 5G®





TASMANIAN

SPECIFICATIONS:

Width	165mm 6 1/2"
Length	2130mm 84"
Thickness	14.2mm or 22mm 9/16" or 7/8"
Installation Type	Tongue & Groove or 5G [®]





TASMANIAN

SPECIFICATIONS:

Width	165mm 6 1/2"
Length	2130mm 84"
Thickness	14.2mm or 22mm 9/16" or 7/8"
Installation Type	Tongue & Groove or 5G®





TASMANIAN

SPECIFICATIONS:

Width	165mm 6 1/2"
Length	2130mm 84"
Thickness	14.2mm or 22mm 9/16" or 7/8"
Installation Type	Tongue & Groove or 5G®





TASMANIAN

SPECIFICATIONS:

Width	165mm 6 1/2"
Length	2130mm 84"
Thickness	14.2mm or 22mm 9/16" or 7/8"
Installation Type	Tongue & Groove or 5G [®]





TASMANIAN

SPECIFICATIONS:

Width	165mm 6 1/2"
Length	2130mm 84"
Thickness	14.2mm or 22mm 9/16" or 7/8"
Installation Type	Tongue & Groove or 5G®





TASMANIAN

SPECIFICATIONS:

Width	165mm 6 1/2"
Length	2130mm 84"
Thickness	14.2mm or 22mm 9/16" or 7/8"
Installation Type	Tongue & Groove or 5G®





TASMANIAN

SPECIFICATIONS:

Width	165mm 6 1/2"
Length	2130mm 84"
Thickness	14.2mm or 22mm 9/16" or 7/8"
Installation Type	Tongue & Groove or 5G®





TASMANIAN

SPECIFICATIONS:

Width	165mm 6 1/2"
Length	2130mm 84"
Thickness	14.2mm or 22mm 9/16" or 7/8"
Installation Type	Tongue & Groove or 5G®





TASMANIAN

SPECIFICATIONS:

Width	165mm 6 1/2"
Length	2130mm 84"
Thickness	14.2mm or 22mm 9/16" or 7/8"
Installation Type	Tongue & Groove or 5G®





TASMANIAN

SPECIFICATIONS:

Width	165mm 6 1/2"
Length	2130mm 84"
Thickness	14.2mm or 22mm 9/16" or 7/8"
Installation Type	Tongue & Groove or 5G®





TASMANIAN

SPECIFICATIONS:

Width	165mm 6 1/2"
Length	2130mm 84"
Thickness	14.2mm or 22mm 9/16" or 7/8"
Installation Type	Tongue & Groove or 5G [®]





TASMANIAN

SPECIFICATIONS:

Width	165mm 6 1/2"
Length	2130mm 84"
Thickness	14.2mm or 22mm 9/16" or 7/8"
Installation Type	Tongue & Groove or 5G [®]





TASMANIAN

SPECIFICATIONS:

Width	165mm 6 1/2"
Length	2130mm 84"
Thickness	14.2mm or 22mm 9/16" or 7/8"
Installation Type	Tongue & Groove or 5G®





TASMANIAN

SPECIFICATIONS:

Width	165mm 6 1/2"
Length	2130mm 84"
Thickness	14.2mm or 22mm 9/16" or 7/8"
Installation Type	Tongue & Groove or 5G®









EUROPEAN ASH

Native to mainland Europe and as strong as oak, European Ash is a durable, shock-absorbent, lightweight timber with many uses. It can withstand temperature fluctuations and is an excellent choice when installing underfloor heating.

European Ash boasts beautiful, distinctive grain variations with swirls and whorls that highlight the beauty of this timber and creates a contemporary look and feel in any room.

Treated with our proprietary reactive technologies, the natural beauty of each plank shines through, no matter the colour you choose.

ASH

SPECIFICATIONS:

Width	190mm 7 1/2"
Length	2130mm 84"
Thickness	14.2mm or 22mm 9/16" or 7/8"
Installation Type	Tongue & Groove or 5G®





ASH

SPECIFICATIONS:

Width	190mm 7 1/2"
Length	2130mm 84"
Thickness	14.2mm or 22mm 9/16" or 7/8"
Installation Type	Tongue & Groove or 5G [®]





ASH

SPECIFICATIONS:

Width	190mm 7 1/2"
Length	2130mm 84"
Thickness	14.2mm or 22mm 9/16" or 7/8"
Installation Type	Tongue & Groove or 5G [®]





ASH

SPECIFICATIONS:

Width	190mm 7 1/2"
Length	2130mm 84"
Thickness	14.2mm or 22mm 9/16" or 7/8"
Installation Type	Tongue & Groove or 5G [®]

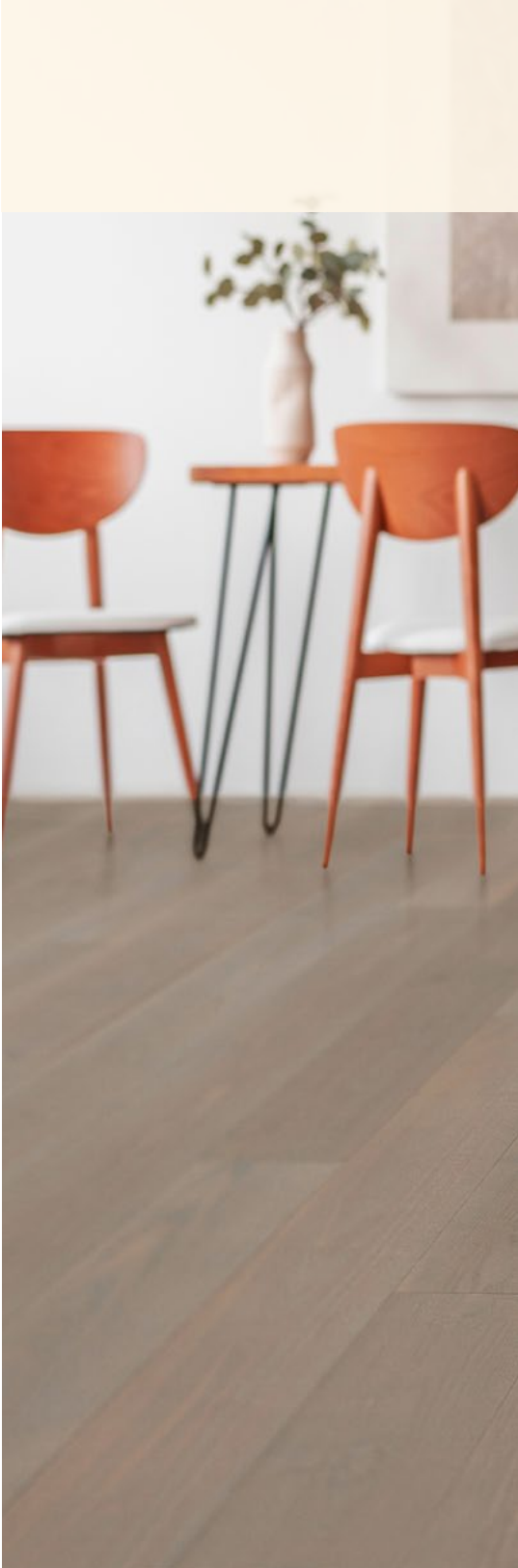




ASH

SPECIFICATIONS:

Width	190mm 7 1/2"
Length	2130mm 84"
Thickness	14.2mm or 22mm 9/16" or 7/8"
Installation Type	Tongue & Groove or 5G®





ASH

SPECIFICATIONS:

Width	190mm 7 1/2"
Length	2130mm 84"
Thickness	14.2mm or 22mm 9/16" or 7/8"
Installation Type	Tongue & Groove or 5G [®]





ASH

SPECIFICATIONS:

Width	190mm 7 1/2"
Length	2130mm 84"
Thickness	14.2mm or 22mm 9/16" or 7/8"
Installation Type	Tongue & Groove or 5G®





ASH

SPECIFICATIONS:

Width	190mm 7 1/2"
Length	2130mm 84"
Thickness	14.2mm or 22mm 9/16" or 7/8"
Installation Type	Tongue & Groove or 5G [®]





ASH

SPECIFICATIONS:

Width	190mm 7 1/2"
Length	2130mm 84"
Thickness	14.2mm or 22mm 9/16" or 7/8"
Installation Type	Tongue & Groove or 5G [®]





ASH

SPECIFICATIONS:

Width	190mm 7 1/2"
Length	2130mm 84"
Thickness	14.2mm or 22mm 9/16" or 7/8"
Installation Type	Tongue & Groove or 5G [®]





ASH

SPECIFICATIONS:

Width	190mm 7 1/2"
Length	2130mm 84"
Thickness	14.2mm or 22mm 9/16" or 7/8"
Installation Type	Tongue & Groove or 5G®





ASH

SPECIFICATIONS:

Width	190mm 7 1/2"
Length	2130mm 84"
Thickness	14.2mm or 22mm 9/16" or 7/8"
Installation Type	Tongue & Groove or 5G®





ASH

SPECIFICATIONS:

Width	190mm 7 1/2"
Length	2130mm 84"
Thickness	14.2mm or 22mm 9/16" or 7/8"
Installation Type	Tongue & Groove or 5G [®]





ASH

SPECIFICATIONS:

Width	190mm 7 1/2"
Length	2130mm 84"
Thickness	14.2mm or 22mm 9/16" or 7/8"
Installation Type	Tongue & Groove or 5G [®]





ASH

SPECIFICATIONS:

Width	190mm 7 1/2"
Length	2130mm 84"
Thickness	14.2mm or 22mm 9/16" or 7/8"
Installation Type	Tongue & Groove or 5G®





ASH

SPECIFICATIONS:

Width	190mm 7 1/2"
Length	2130mm 84"
Thickness	14.2mm or 22mm 9/16" or 7/8"
Installation Type	Tongue & Groove or 5G [®]





ASH

SPECIFICATIONS:

Width	190mm 7 1/2"
Length	2130mm 84"
Thickness	14.2mm or 22mm 9/16" or 7/8"
Installation Type	Tongue & Groove or 5G®





ASH

SPECIFICATIONS:

Width	190mm 7 1/2"
Length	2130mm 84"
Thickness	14.2mm or 22mm 9/16" or 7/8"
Installation Type	Tongue & Groove or 5G [®]





ASH

SPECIFICATIONS:

Width	190mm 7 1/2"
Length	2130mm 84"
Thickness	14.2mm or 22mm 9/16" or 7/8"
Installation Type	Tongue & Groove or 5G®





ASH

SPECIFICATIONS:

Width	190mm 7 1/2"
Length	2130mm 84"
Thickness	14.2mm or 22mm 9/16" or 7/8"
Installation Type	Tongue & Groove or 5G [®]





ASH

SPECIFICATIONS:

Width	190mm 7 1/2"
Length	2130mm 84"
Thickness	14.2mm or 22mm 9/16" or 7/8"
Installation Type	Tongue & Groove or 5G [®]





ASH

SPECIFICATIONS:

Width	190mm 7 1/2"
Length	2130mm 84"
Thickness	14.2mm or 22mm 9/16" or 7/8"
Installation Type	Tongue & Groove or 5G®









PECAN

Pecan – part of the Hickory family – is renowned for its strength and durability, with gorgeous colour variations between the heartwood and sapwood, not to mention its unique, wavy grain and lovely whorls and peck marks throughout.

Pecan is a relatively solid wood, grown across the Southern United States and makes a beautiful, stand-out choice for flooring.

PECAN

SPECIFICATIONS:

Width	190mm 7 1/2"
Length	2130mm 84"
Thickness	14.2mm or 22mm 9/16" or 7/8"
Installation Type	Tongue & Groove or 5G [®]





PECAN

SPECIFICATIONS:

Width	190mm 7 1/2"
Length	2130mm 84"
Thickness	14.2mm or 22mm 9/16" or 7/8"
Installation Type	Tongue & Groove or 5G®





PECAN

SPECIFICATIONS:

Width	190mm 7 1/2"
Length	2130mm 84"
Thickness	14.2mm or 22mm 9/16" or 7/8"
Installation Type	Tongue & Groove or 5G®





PECAN

SPECIFICATIONS:

Width	190mm 7 1/2"
Length	2130mm 84"
Thickness	14.2mm or 22mm 9/16" or 7/8"
Installation Type	Tongue & Groove or 5G [®]





PECAN

SPECIFICATIONS:

Width	190mm 7 1/2"
Length	2130mm 84"
Thickness	14.2mm or 22mm 9/16" or 7/8"
Installation Type	Tongue & Groove or 5G [®]





PECAN

SPECIFICATIONS:

Width	190mm 7 1/2"
Length	2130mm 84"
Thickness	14.2mm or 22mm 9/16" or 7/8"
Installation Type	Tongue & Groove or 5G [®]







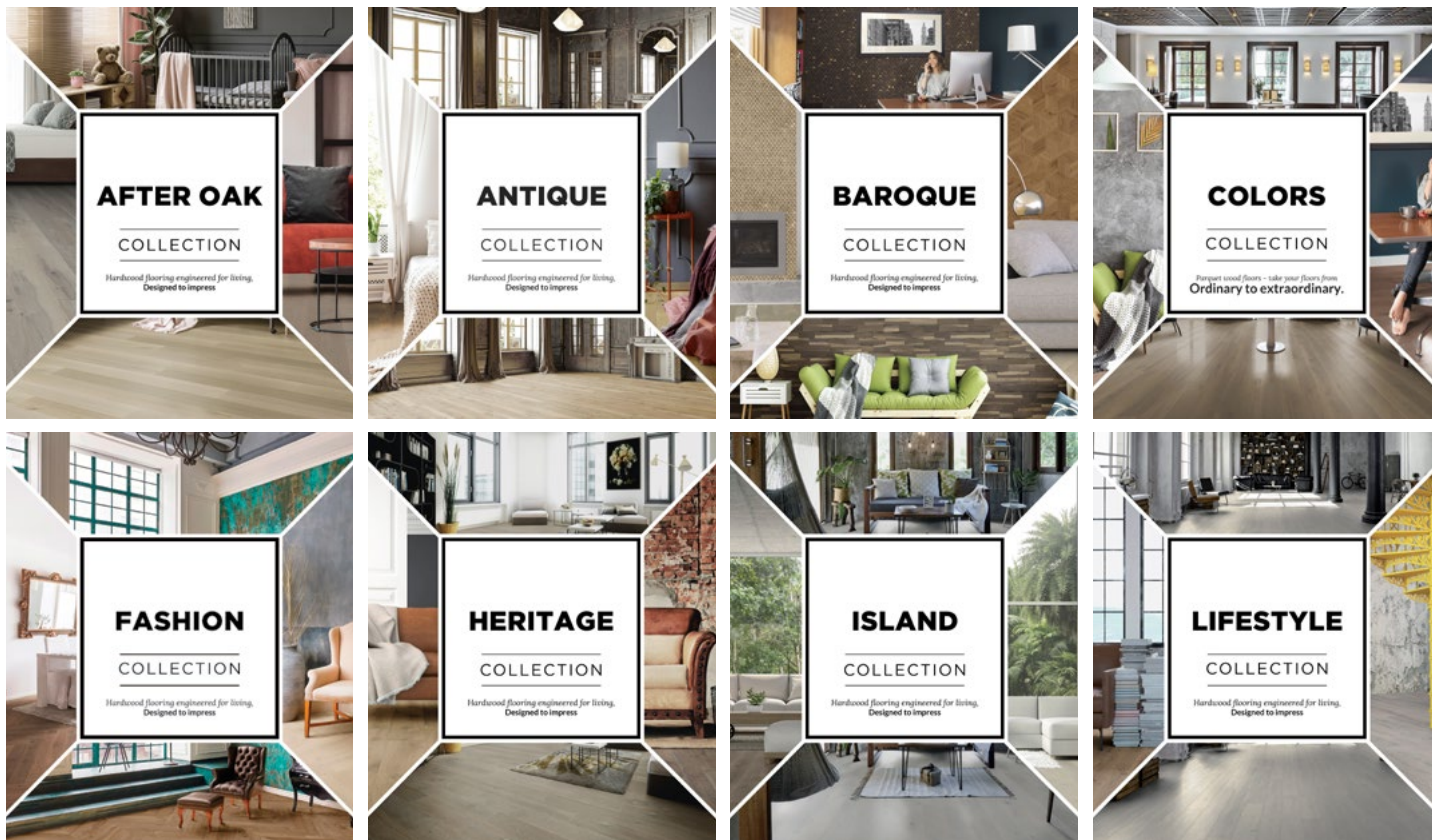
COMPLIANCE & CERTIFICATION

Our products have been tested and certified by international bodies:

- 25 years limited residential warranty
- CE-European Conformity
- VOC “Emissions dans l’air interieur”
- FloorScore
- No added Formaldehyde
- SVLK/FLEGT Certified

COATING – Bona®

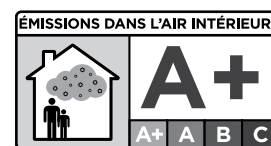
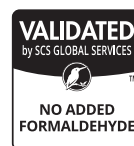
ADHESIVE – AkzoNobel



Printed material in this catalogue is provided as a reference only, whilst we have made every effort to ensure the colours and wood characteristics displayed are as accurate as possible these images may vary from the actual product.

Our General Terms & Conditions, technical specifications, details on warranty and all compliance reports are available upon request.

Please visit our website – About Us for further details www.forestrytimber.com



**Printed material in this catalogue is provided as a reference only.
Colour and wood characteristics may vary from actual product.**

All images and information in this catalogue are copyrighted. Any form of reproduction is a violation of copyright law and is strictly prohibited. You may NOT distribute, transmit, reuse, repost, or use the content in this catalogue for public or commercial purposes – including the text and images – without written permission.

© 2022 Woodline Parquetry
www.woodlineparquetry.com

